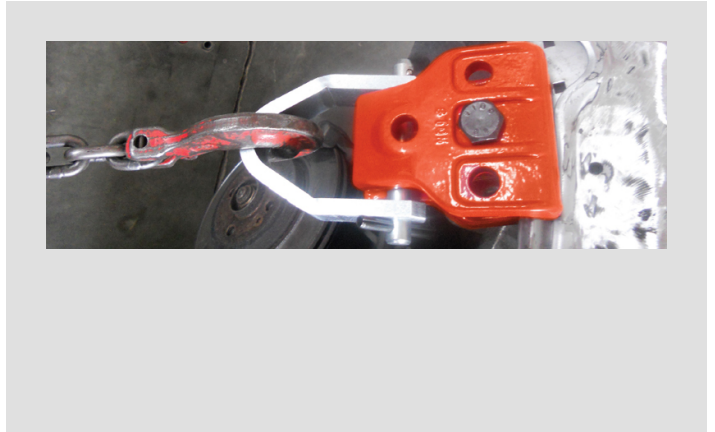


## C121 Pull Clamp



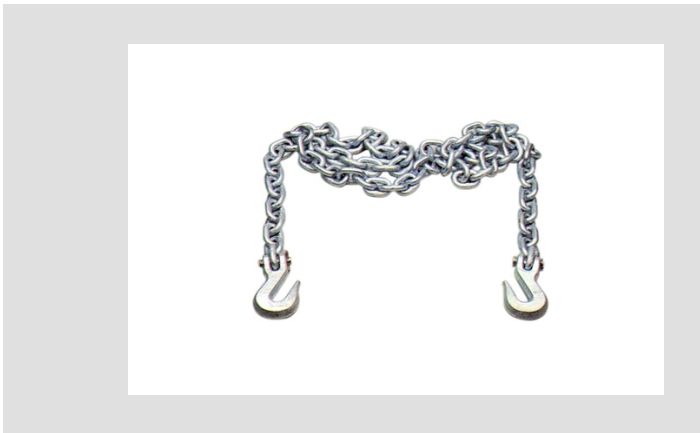
The UnoLiner C121 Pull Clamp is a pull clamp without hinge. Because it is self-locking, it does not need to be screwed onto the vehicle bodywork panel. This pull clamp is forged from high strength steel and features interchangeable hardened steel knurled jaws.

## C131-96 Pull-Bracket



The UnoLiner C131-96 Pull-Bracket is a universal pulling bracket made from hardened steel, equipped with a knurled jaw for maximum grip.

## Misc. Tools



UnoLiner offers a full range of tools, body clamps, chains, hooks, and safety cables. Every professional collision repair body shop should own these essential, high-quality tools. No matter the type, they are built to last and able to withstand repeated, heavy use, and all of that at a competitive price.

## T10 Transport Dolly



The UnoLiner T10 Transport Dolly is equipped with a strong frame and four swivel casters, which makes it perfect for moving damaged vehicles around in your repair workshop. Roll the damaged vehicle fast and easy onto any of UnoLiner's *Roll-Over* or *In-Ground* chassis straightening and collision repair benches, even if the vehicle in question has no tires.